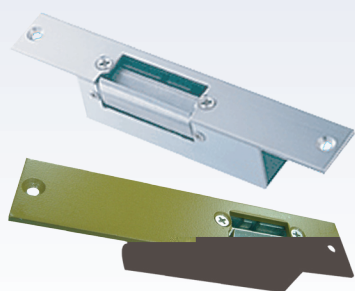




ESL-100/200 Electric Strikes



Specifications

Model No.	ESL-100	ESL-200
Q'ty/Carton	50	50
NW(kg)	17.5	12.8
GW(kg)	18.5	13.8
Cu.Ft.	1.72	0.74
Power Input	DC 12V, 400mA	DC 12V, 400mA
Dimension(LxWxD) (mm)	150 x 30 x 35	160 x 25 x 31
Weight	286g	239g

Package Content: · ESL-100 or ESL-200 x 1 · Accessory pack with screws x 1

EBL-100

Electric Bolt Lock

Specifications

Model No.	EBL-100		
Q'ty / Carton	20	GW(kg)	22.5
NW(kg)	21.5	Cu.Ft.	1.72
Power Input	DC 12V, 300mA	Current Consumption	900mA (max)
Sensor Input	Lock & Door Sensor		
Weight	693g		
Dimension (LxWxD) (mm)	Body: 200 x 34 x 42 Cover Plate: 210 x 42 x 0.8 Face Plate: 200 x 34 x 3 Strike Plate: 90 x 24x 2.7		

Package Content: · EBL-100 x 1 · Accessory pack with screws x 1

MDL Series Electromagnetic Lock



Accessories

Specifications

Model No.	MDL-300H	MDL-HS	MDL-100S
Q'ty / Carton	20	10	10
NW(kg)	24	22	22
GW(kg)	25	23	23
Cu.Ft.	0.74		
Holding Force	150kg / 300LBS	300kg / 600LBS	
Operating Voltage	DC 12V, DC 24V		
Current Consumption	480mA . 240mA		
Dimension (LxWxH) (mm)	202 x 34.5 x 21	250 x 26 x 47	250 x 26 x 47
Weight	621g	2Kg	
Accessories	MLA-300 L&Z type Brackets	MLA-003 Armature plate housing MLA-001 Adjustable Bracket MLA-002 L&Z type Brackets	

Package Content: · MDL-300H or MDL-HS or MDL-100S x 1 · Accessory pack with screws x 1

* Product design and specifications are subject to change without prior notice.